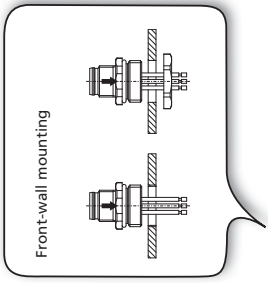


not for 12 pins

Product line	Version	Pins	Soldering-contact Item-No.	Type-designation	Wire-contact Item-No.	
Front-wall mounting (optional threaded rear)	<i>f</i>   T   CuZn	3	EC-FK3-L/16	8027566	EC-FK3-0,5/16	8027515
		4	EC-FK4-L/16	8027569	EC-FK4-0,5/16	8027516
		4+PE	EC-FK5-L/16	8027570	EC-FK5-0,5/16	8027520
		5	EC-FK4.5-L/16	8052079	EC-FK4.5-0,5/16	8027519
		8	EC-FK8-L/16	8028122	EC-FK8-0,5/16	8028110
		12	EC-FK12-L/16	8028124	EC-FK12-0,5/16	8028116
	<i>f</i>   T   CuZn   O	3			EC-FKD3-0,5/16	8027526
		4			EC-FKD4-0,5/16	8027527
		4+PE			EC-FKD5-0,5/16	8027529
		5			EC-FKD4.5-0,5/16	8027528
		8			EC-FKD8-0,5/16	8028111
		12			EC-FKD12-0,5/16	8028117
	<i>f</i>   T   V4A	3	EC-FKE3-L/16	8029169	EC-FKE3-0,5/16	8028126
		4	EC-FKE4-L/16	8029170	EC-FKE4-0,5/16	8028127
		4+PE	EC-FKE5-L/16	8029171	EC-FKE5-0,5/16	8028131
		5	EC-FKE4.5-L/16	8052080	EC-FKE4.5-0,5/16	8028128
		8	EC-FKE8-L/16	8029016	EC-FKE8-0,5/16	8029015
		12	EC-FKET2-L/16	8029701	EC-FKET2-0,5/16	8029696
	<i>m</i>   T   CuZn	3	EC-FS3-L/16	8029545	EC-FS3-0,5/16	8027382
		4	EC-FS4-L/16	8029546	EC-FS4-0,5/16	8027383
		4+PE	EC-FS5-L/16	8029548	EC-FS5-0,5/16	8027393
		5	EC-FS4.5-L/16	8029547	EC-FS4.5-0,5/16	8027394
		8	EC-FS8-L/16	8029551	EC-FS8-0,5/16	8028072
		12	EC-FS12-L/16	8029552	EC-FS12-0,5/16	8028073
<i>m</i>   T   CuZn   O	3			EC-FSD3-0,5/16	8027467	
	4			EC-FSD4-0,5/16	8027469	
	4+PE			EC-FSD5-0,5/16	8027471	
	5			EC-FSD4.5-0,5/16	8027470	
	8			EC-FSD8-0,5/16	8028074	
	12			EC-FSD12-0,5/16	8028077	
<i>m</i>   T   V4A	3	EC-FSE3-L/16	8029553	EC-FSE3-0,5/16	8028145	
	4	EC-FSE4-L/16	8029554	EC-FSE4-0,5/16	8028147	
	4+PE	EC-FSE5-L/16	8029556	EC-FSE5-0,5/16	8028149	
	5	EC-FSE4.5-L/16	8029555	EC-FSE4.5-0,5/16	8028148	
	8	EC-FSE8-L/16	8029557	EC-FSE8-0,5/16	8029083	
	12	EC-FSE12-L/16	8029558	EC-FSE12-0,5/16	8029344	

Other versions, wire-lengths and -colours are available upon request.

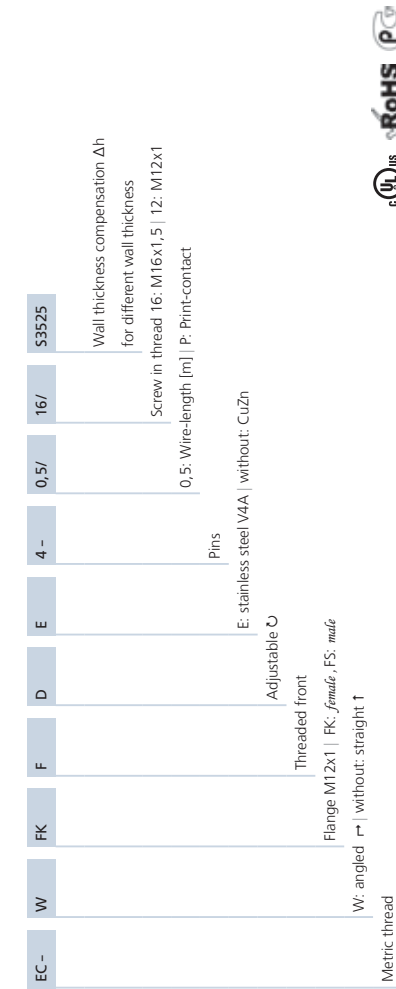


Dimensional drawings see page 38

### M12x1 flanges for front-wall mounting

Technical data	Value
Rated voltage [U <sub>max</sub> ]	250V 60V 30V
Current load [I <sub>max</sub> ]	3, 4, 4+PE, 5 8, 12 4A 2A 1.5A ≥10 <sup>8</sup> Ω
Insulation resistance	≥10 <sup>8</sup> Ω
Standards	IEC61076-2-101
Materials	Flange housing CuZn, nickel-plated   stainless steel 1.4404 Contact carrier ( <i>female</i> ) TPU, BK Contact carrier ( <i>male</i> ) PA GF, BK Contacts CuZn, gold-plated Sealing ( <i>female</i> ) FPM/FKM Sealing (screw in thread) NBR
Ambient temperature	-30°C...+90°C
Degree of pollution	3
Protection class (installed)	IP67
Mechanical life cycle	>100 mating cycles

Coding A   <i>female</i>	4 pins	5 pins	8 pins	12 pins
3 pins				
Coding A   <i>male</i>				
1BN   3BU   4BK	1BN   2WH 3BU   4BK	1BN   2WH 3BU   4BK   5GN/YE	1WH   2WH 3BU   4BK   5GY	1BN   2BU   3WH 4GN   5PK   6YE   7BK 8GY   9RD   10VT 11GY/PK   12RD/BU



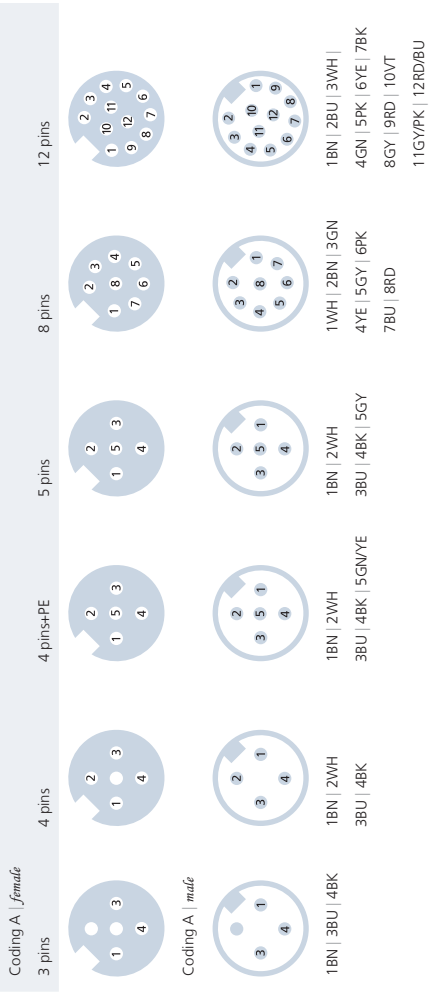
Product line	Version	Pins	Print-contact Item-No.	Type-designation	Wire-contact Item-No.
Back-wall mounting (threaded front)	$f \uparrow$   CuZn   $\odot$	3	8029476	EC-FKFD3-0,5/16	8027547
	$f \uparrow$   V4A   $\odot$	4	8029477	EC-FKFD4-0,5/16	8027548
	$f \uparrow$   V4A   $\odot$	4+PE	8029478	EC-FKFD5-0,5/16	8027550
	$f \uparrow$   V4A   $\odot$	5	8029479	EC-FKFD4,5-0,5/16	8027549
	$f \uparrow$   V4A   $\odot$	8	8029480	EC-FKFD8-0,5/16	8028120
Back-wall mounting (metric thread)	$f \uparrow$   V4A   $\odot$	12	8029695	EC-FKDE3-0,5/16	8029175
	$f \uparrow$   V4A   $\odot$	4	8029508	EC-FKDE4-0,5/16	8029176
	$f \uparrow$   V4A   $\odot$	4+PE	8029509	EC-FKDE5-0,5/16	8029189
	$f \uparrow$   V4A   $\odot$	5	8029510	EC-FKDE4,5-0,5/16	8029752
	$f \uparrow$   V4A   $\odot$	8	8029512	EC-FKDE8-0,5/16	8029160
Back-wall mounting (angled)	$f \uparrow$   CuZn   $\Delta h < 2,5\text{mm}$	4	8050273	EC-WRFK4-P1/2S3525	8050275
	$f \uparrow$   CuZn   $\Delta h < 4,0\text{mm}$	5	8050274	EC-WRFK5-P1/2S3525	8050273
	$f \uparrow$   CuZn   $\Delta h < 4,0\text{mm}$	4	8050272	EC-WRFK4-P1/2S3540	8050274
	$f \uparrow$   CuZn   $\Delta h < 5,0\text{mm}$	5	8045188	EC-WRFK5-P1/2S3540	8050272
	$f \uparrow$   CuZn   $\Delta h < 5,0\text{mm}$	4	8050257	EC-WRFK4-P1/2S3550	8045188
Back-wall mounting (straight)	$m \uparrow$   CuZn   $\odot$	3	8029495	EC-FSFD3-0,5/16	8027509
	$m \uparrow$   CuZn   $\odot$	4	8029497	EC-FSFD4-0,5/16	8027508
	$m \uparrow$   CuZn   $\odot$	4+PE	8029501	EC-FSFD5-0,5/16	8027505
	$m \uparrow$   CuZn   $\odot$	5	8029499	EC-FSFD4,5-0,5/16	8027506
	$m \uparrow$   CuZn   $\odot$	8	8029503	EC-FSFD8-0,5/16	8028080
Back-wall mounting (angled)	$m \uparrow$   V4A   $\odot$	12	8029496	EC-FSDE3-0,5/16	8028554
	$m \uparrow$   V4A   $\odot$	3	8029498	EC-FSDE4-0,5/16	8029213
	$m \uparrow$   V4A   $\odot$	4	8029502	EC-FSDE5-0,5/16	8029214
	$m \uparrow$   V4A   $\odot$	4+PE	8029504	EC-FSDE4,5-0,5/16	8029216
	$m \uparrow$   V4A   $\odot$	5	8029506	EC-FSDE8-0,5/16	8029215
Back-wall mounting (metric thread)	$m \uparrow$   CuZn	12	8046571	EC-WFSF4-P1/2	8029158
	$m \uparrow$   CuZn	4	8044960	EC-WFSF5-P1/2	8029212
	$m \uparrow$   CuZn	5			
	$m \uparrow$   CuZn	8			
	$m \uparrow$   CuZn	12			

Other versions, wire-lengths and -colours are available upon request.



### M12x1 flanges for back-wall mounting

Technical data	Value
Rated voltage [U <sub>max</sub> ]	250V
	60V
	30V
Current load [I <sub>max</sub> ]	4A
	2A
	1.5A
Insulation resistance	$\geq 10^8 \Omega$
Standards	IEC61076-2-101
Materials	CuZn, nickel-plated   stainless steel 1.4404 TPU, BK
Contact carrier ( <i>female</i> )	PA,GF, BK
Contact carrier ( <i>male</i> + angled version)	CuZn, gold-plated
Contacts	PPM/FKM
Sealing	NBR
Sealing (screw in thread)	-30°C...+90°C
Ambient temperature	3
Degree of pollution	IP67
Protection class (installed)	>100 mating cycles
Mechanical life cycle	



*female*

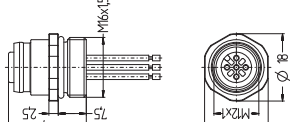
Soldering-contact

FK(E) \_-L/16



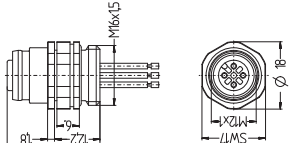
Wire-contact

FK(E) \_-0,5/16



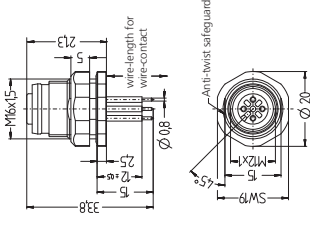
Wire-contact

FKD \_-0,5/16



Print-contact

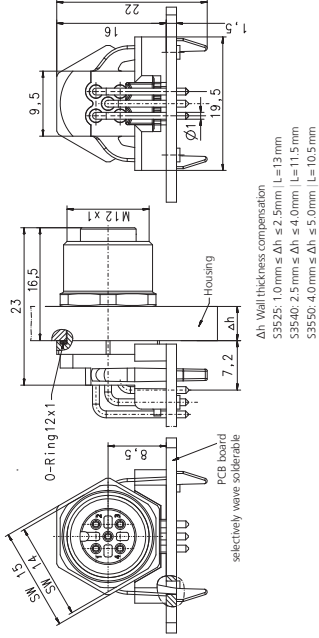
FKFD(E) \_-P/16 | FKFD(E) \_-0,5/16



*female*

Print-contact

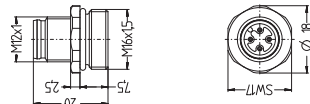
WFKF \_-P/12/5... | see Δh Wall thickness compensation



*male*

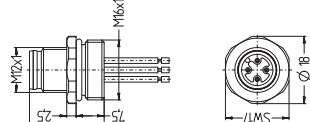
Soldering-contact

FS(E) \_-L/16



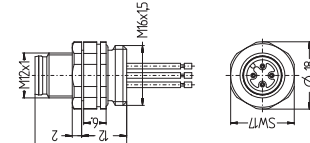
Wire-contact

FS(E) \_-0,5/16



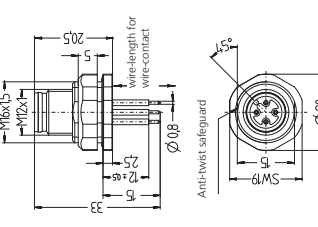
Wire-contact

FSD \_-0,5/16



Print-contact

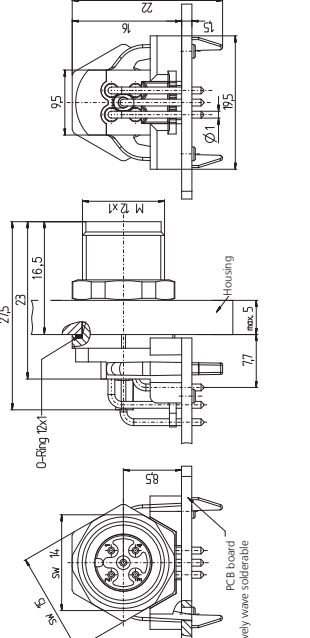
FSFD(E) \_-P/16 | FSFD(E) \_-0,5/16



*male*

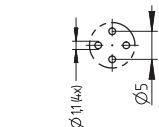
Print-contact

WFSF \_-P/12

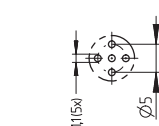


Footprint

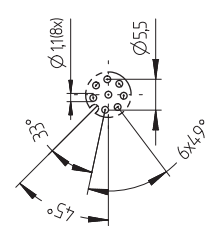
4 pins



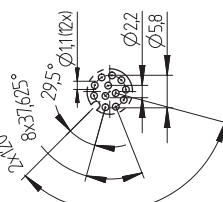
5 pins



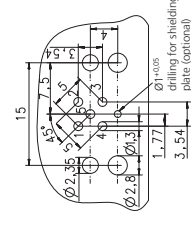
8 pins | A



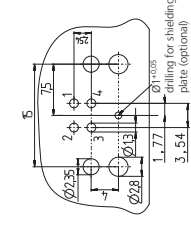
12 pins | A



4 pins *female*

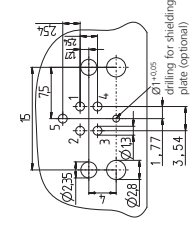


4 pins *male*



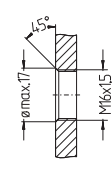
Footprint

5 pins *male*



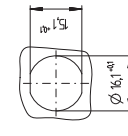
Panel cut-out

Screw n thread  
M16x1,5



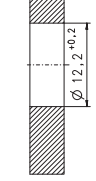
Print-contact ↑

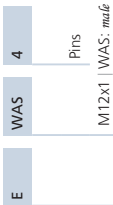
Wire-contact



Panel cut-out

Print-contact

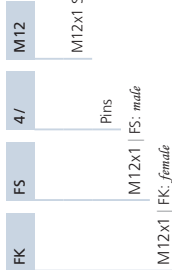




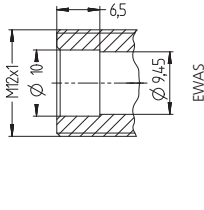
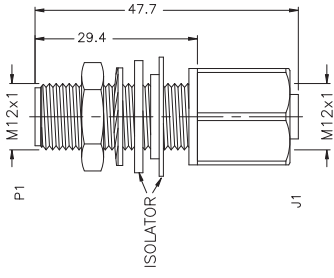
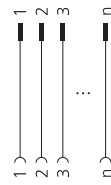
Panel connector



Product line	Version	Type-designation	Item-No.
M12x1...panel connector	<i>m</i>   ↑	EWAS4	8008155
		EWAS5	8017592
		EWAS4.5	8008156
		EWAS8	8009737
		EWAS12	8030496



Product line	Version	Type-designation	Item-No.
M12x1_ Feed-through connection	<i>f</i>   <i>m</i>	FKFS4M12	8018404
		FKFS4.5M12	8018405
		FKFS8M12	8018410



FKFS

### M12x1 panel connector | Cabinet feed-through

Technical data	Panel connector	Feed-through connection
Rated voltage [Umax]	Pins Value 4 250V 4+PE, 5 60V 8, 12 30V	Pins Value 4 250V 5 60V 8 30V
Current load [Imax]	4, 4+PE, 5 4A 8 2A 12 1.5A	4 4A 8 2A
Insulation resistance	≥10 <sup>8</sup> Ω	≥10 <sup>8</sup> Ω
Standards	IEC 61076-2-101	IEC 61076-2-101
Materials	Contact carrier 4-8-pins PA GF, BK Contact carrier 12 pins TPU, BK Contacts CuZn, gold-plated	Flange housing CuZn, nickel-plated Contact carrier TPU, YE Contacts CuZn, gold-plated
Ambient temperature	-30°C...+90°C	-30°C...+90°C
Degree of pollution	3	3
Protection class	IP67	IP67
Mechanical life cycle	>100 mating cycles	>100 mating cycles

Coding A   female	Coding A   male
4 pins	4 pins
4 pins+PE	4 pins
5 pins	5 pins
8 pins	8 pins
12 pins	12 pins

